

All about Clever

Plymouth Public Schools has a new tool -- **Clever**. Clever is a resource which allows us to bundle our digital tools in one place and allow Teachers and Students access via a single sign-on -- using their Google account. *Instant Login* lets the students log into multiple applications with a single username and password. Secure Sync automatically creates, organizes and archives accounts between our Aspen Student Information System and our learning applications nightly.



PLYMOUTH PUBLIC SCHOOLS

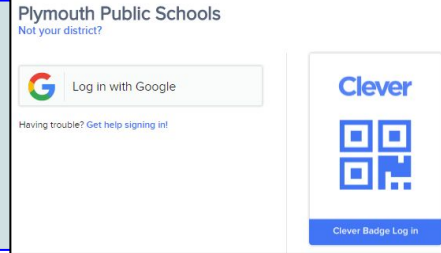
*Clever Sign-In Portal (click Log in with Google)
OR if using badge, can click on "Clever Badge Log In"*

<https://clever.com/in/plymouth>

(Link available under "Quick Links" on PPS Website)

Teacher/Student Username: Plymouth Google Account

Teacher/Student Password: Plymouth Google Account Password



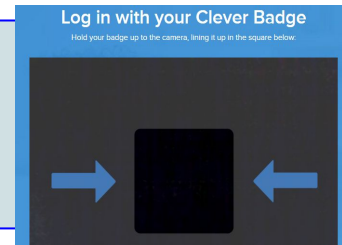
Clever Badge Screen (K-2 Students)

<https://clever.com/badges>

(Requires a device with a camera; i.e., Chromebook)

For use at School - in the lab and Chromebooks.

Student holds their Badge up to the Camera.



PPS Chromebooks

Elementary Chromebooks:

Grade K-2: Click on NEXT (blue button) and scan your Clever badge.

Grade 3-5: Click on "Sign in with a different account" for the autofill of @student.plymouth.k12.ma.us

Grades 6-12: Log in with their Google credentials as usual.

Clever URL <https://clever.com/in/plymouth> or access via the Symbaloo. Click on "Log in with Google" and they will be logged directly into Clever.



Google Sign-In (method most likely used by Grade 6-12 Students)

If a Teacher/Student logs into their Plymouth Google Account, they can access Clever at

<https://clever.com/in/plymouth>. Click on "Log in with Google" and they will be logged directly into Clever.